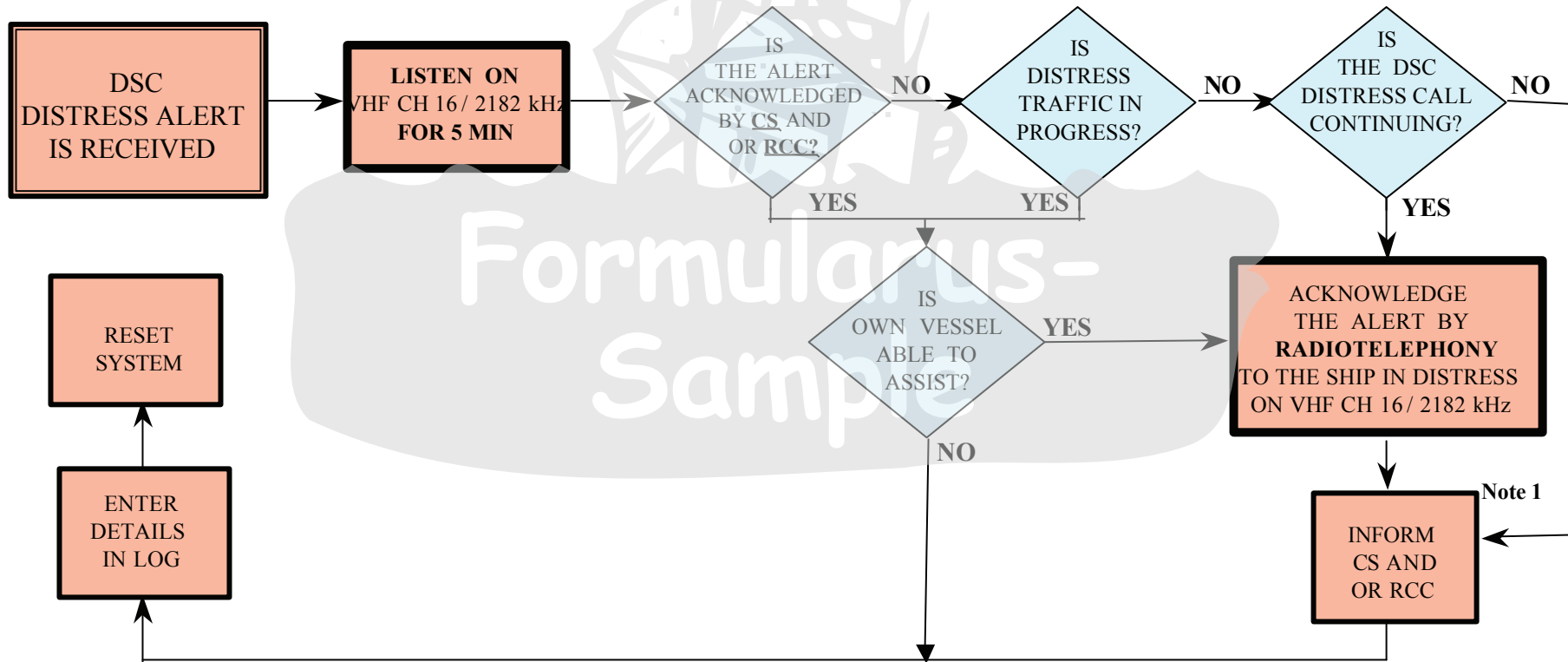


IMO recommended COMSAR/Circ. 25, dated 15.03.2001,
to be displayed on the ship's bridge as A4 size poster.

FLOW DIAGRAM 1

ACTIONS BY SHIPS UPON RECEPTION OF VHF / MF DSC DISTRESS ALERT



REMARKS:

Note 1 : Appropriate or relevant RCC and/or Coast Station shall be informed accordingly. If further DSC alerts are received from the same source and the ship in distress is beyond doubt in the vicinity, a DSC acknowledgement may, after consultation with an RCC or Coast Station, be sent to terminate the call.

Note 2 : In no case is a ship permitted to transmit a DSC distress relay call on receipt of a DSC distress alert on either VHF channel 70 or MF channel 2187.5 kHz.

CS = Coast Station

RCC = Rescue Co-ordination Center