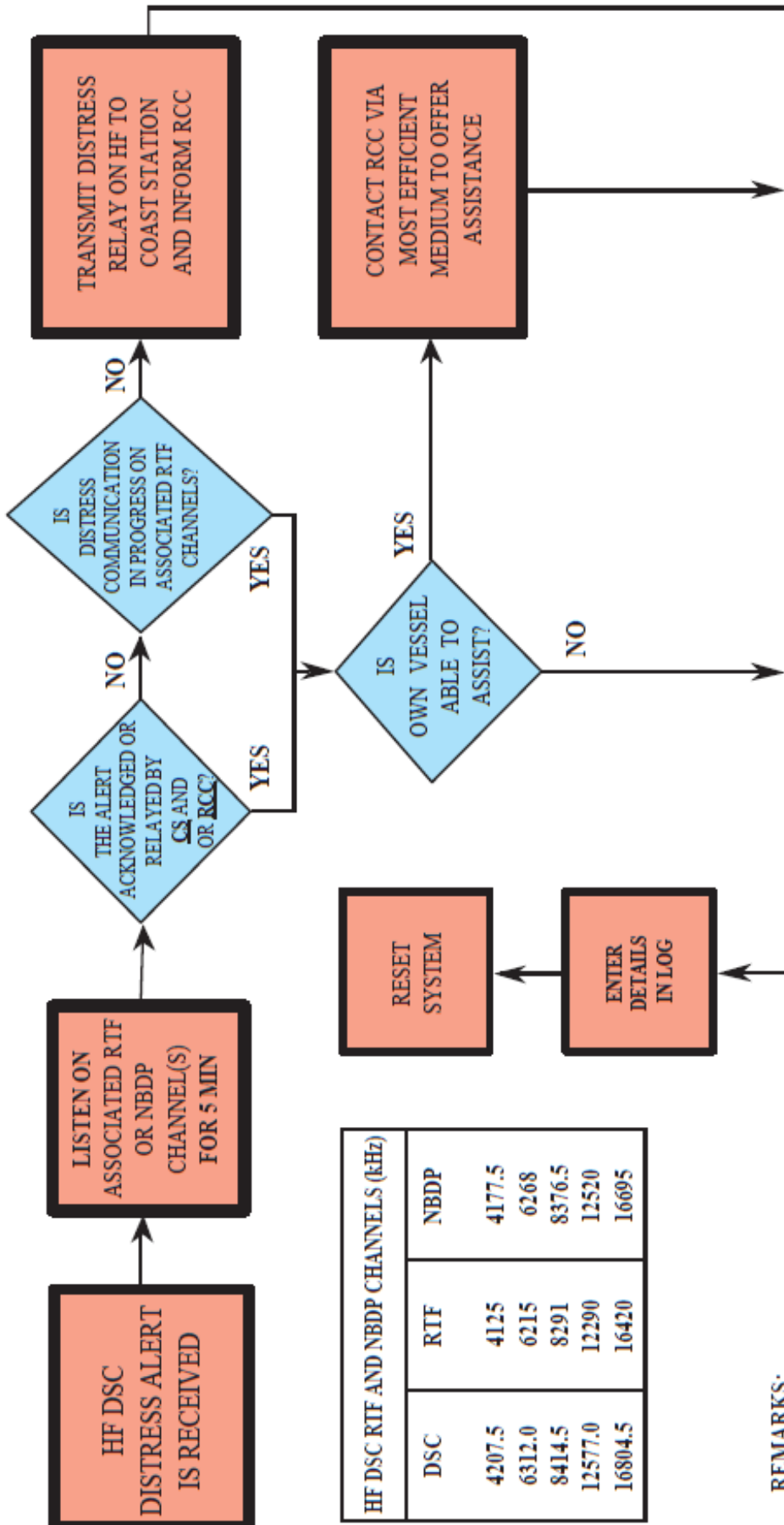


ACTIONS BY SHIPS UPON RECEPTION OF HF DSC DISTRESS ALERT



| HF DSC RTF AND NBDP CHANNELS (kHz) | | |
|------------------------------------|-------|--------|
| DSC | RTF | NBDP |
| 4207.5 | 4125 | 4177.5 |
| 6312.0 | 6215 | 6268 |
| 8414.5 | 8291 | 8376.5 |
| 12577.0 | 12290 | 12520 |
| 16804.5 | 16420 | 16695 |

REMARKS:

- NOTE 1 : If it is clear the ship or persons in distress are not in the vicinity and/or other crafts are better placed to assist, superfluous communications which could interfere with search and rescue activities are to be avoided. Details should be recorded in the appropriate logbook.
- NOTE 2 : The ship should establish communications with the station controlling the distress as directed and render such assistance as required and appropriate.
- NOTE 3 : Distress relay calls should be initiated manually.

CS = Coast Station RCC = Rescue Co-ordination Center